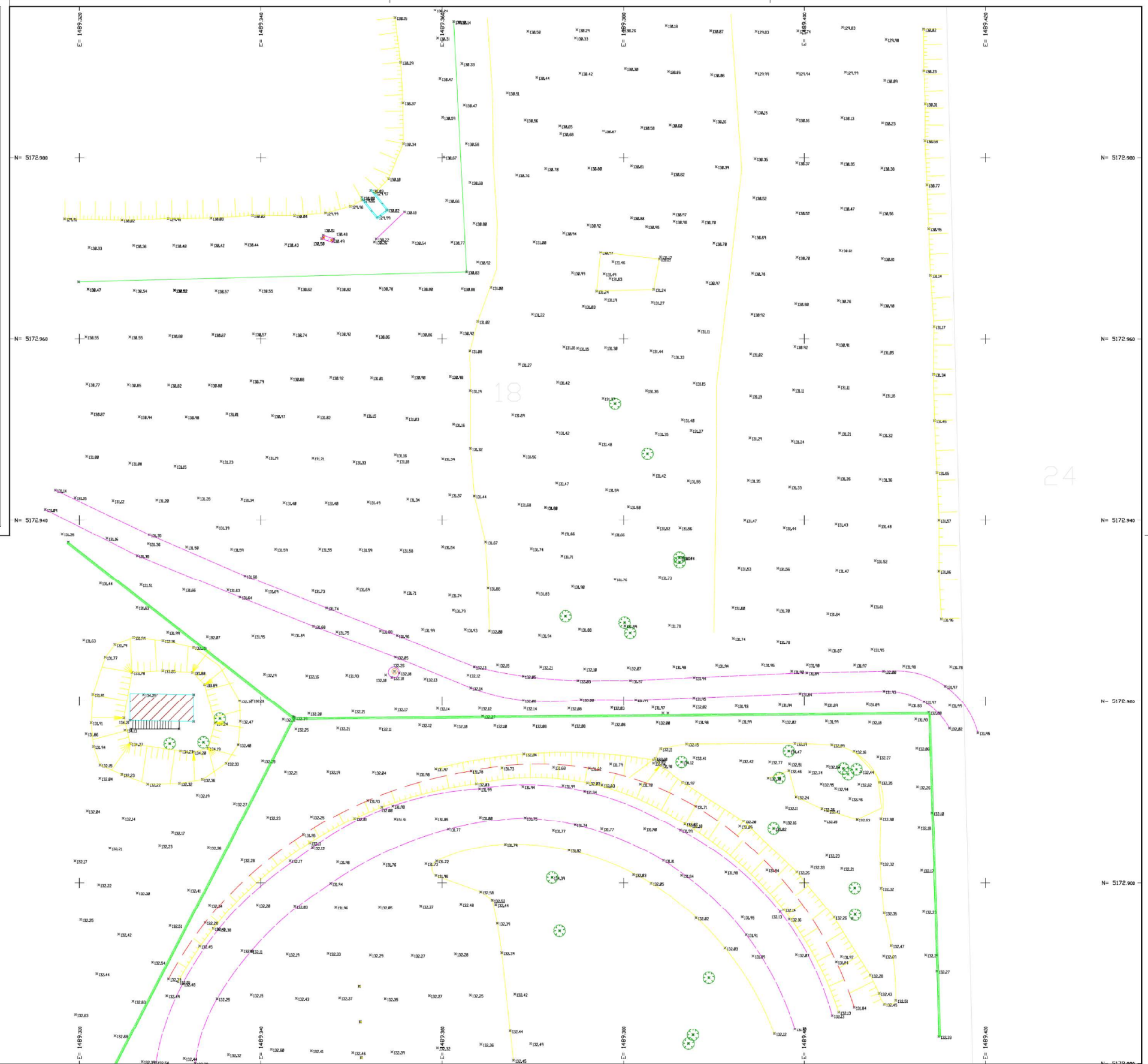
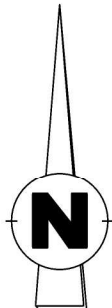
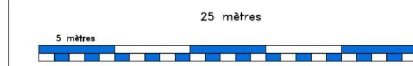








Levé en mode terrestre : Lambert 93 CC46  
Levé rattaché au Nivellement Général de la France



<div>ESID BORDEAUX</div> <div></div> <div>USID ANGOULEME</div> <div>QUARTIER FAYOLLE-BOSSUT Boulevard LIEDOT CS 52101 16021 Angoulême CEDEX</div>	<div>Chargé d'affaires</div> <div>ASC Eric Prunier</div>	<div>COMMUNE DE BRIE (16)</div> <div>CASERNEMENT ET CHAMP DE TIR DE LA BRACONNE</div> <div>515e RT /1er RIMA</div>	<div></div> <div>Secrétariat général pour l'administration</div>		<div></div> <div>RÉPUBLIQUE FRANÇAISE</div>		
	<div>Dessinateur</div>		<div>PLAN TOPOGRAPHIQUE</div>				
	<div>Architecte</div> <div>ASC Romain BROCHARD</div>						
	<div>Chef de l'USID d'Angoulême</div> <div>IPMI (CDT) Aurore FOX</div>		<div>DCE</div>	<div></div> <div>CONSTRUCTION D'UN MAGASIN DE STOCKAGE</div>	<div>Date : 28/10/2024</div> <div>Echelle : 1/500</div>	<div>PROJET : 23094</div> <div>COSI : 60132</div>	<div>03</div>